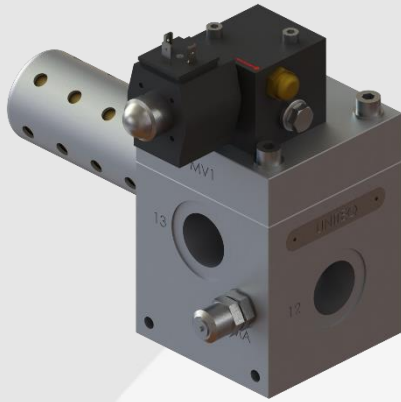


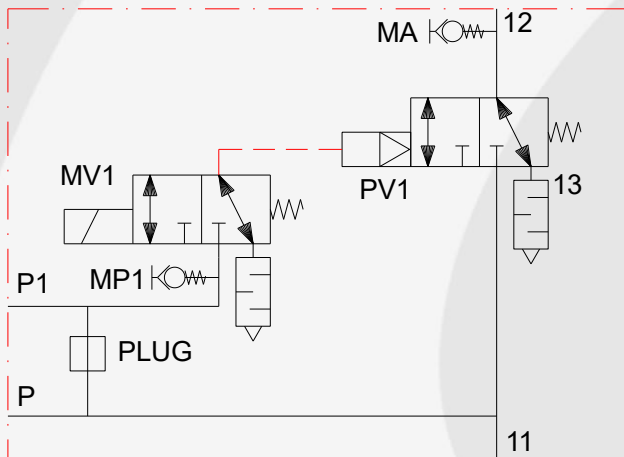


## Pneumatic manifold G1-MO 1xNC

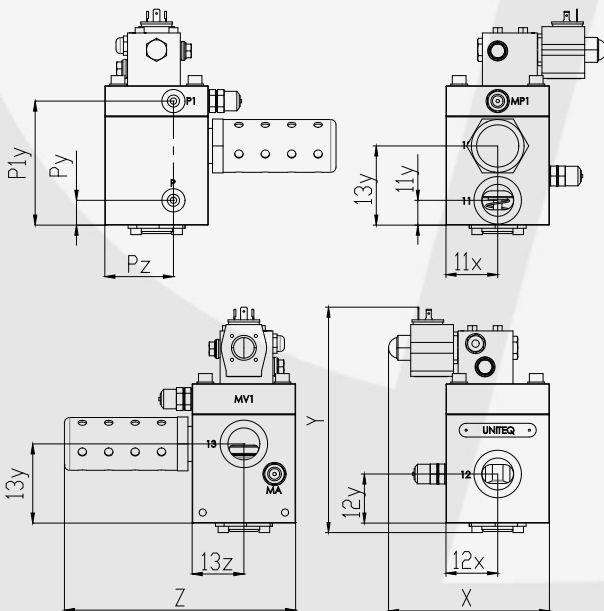
### Image



### Symbol



### Drawing



### Technical features

- Suitable for single acting (SA) actuator
- Fail safe open/close function (1x NC, power/signal loss)
- Modulating MO or open close O/C (1x NC) function
- Internal connection prepared for lock-up function
- SIL2 certified according to IEC 61508
- Operation pressure 0...10 bar (0...145psi)
- Operation temperature -25°C -13°F / +70°C +158°F
- Supplied medium air, filtered non-lubricated and dry
- Equipped with prepared lock-up valve connection (P/P1)
- ATEX implementation suitable

### Technical data

#### Sizes & selection

Port size		P/P1	Max flow		Model	
11/12	13		ltr/min	CV (kg)		
G1	G1	G1/4	8.000	...	4,2	UGP100062

#### Configuration

Function MO or O/C (1x NC "MV1")

#### Connections

Port (11) main supply connection  
 Port (P/P1) external supply solenoid valve  
 Port (12) supply to actuating release  
 Port (13) release  
 MA/MP1 measurement connection

#### Electric

Power consumption solenoid valve (MV1):

16.9 W,	24 VDC,	703 mA,	IP65.
17.3 VA	230 VAC,	75 mA	IP67.

#### Order codes:

UGP100062-24VDC or UGP100062-230VAC

### Sizes

#### Dimensions

11	12	13	P	P1	MA	MP1
G1	G1	G1	G1/4	G1/4	G1/4	G1/4
PLUG	P1y	Py	Pz	13y	11y	11x
G1/8	116	24	65	76	24	49
13z	12x	12y	X	Y	Z	
49	49	47	152	203	219	

#### Support connection manifold

2 times holes M8, depth 12mm

#### Material

Housing Aluminium anodize  
 Internal parts Stainless steel, Brass, POM  
 Seals NBR / PUR