



UGP100065

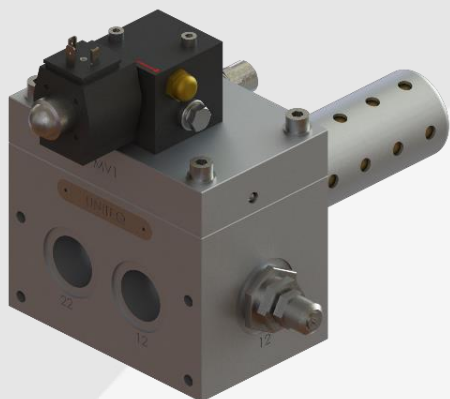
UNITEQ BV

Oude Graaf 18, 6002 NL, Netherlands
T. +31 495 52 45 65
E. sales@uniteq.nl

Version 2022.v01 EN

Pneumatic manifold G1-MO 1xNC-O/C 1xNC

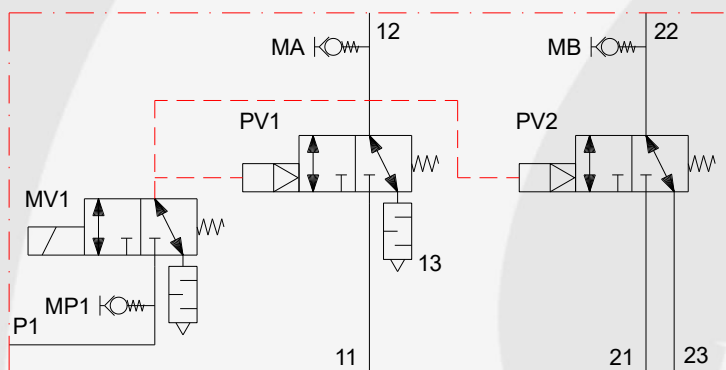
Image



Technical features

- Suitable for double acting (DA) actuator
- Fail safe open/close function (1x NC, power/signal loss)
- Modulating (MO 1x NC) function
- Open/close (O/C 1x NC) function
- SIL2 certified according to IEC 61508
- Operation pressure 0...10 bar (0...145psi)
- Operation temperature -25°C -13°F / +70°C +158°F
- Supplied medium air, filtered non-lubricated and dry
- ATEX implementation suitable

Symbol



Technical data

Sizes & selection

| Port size) | | Max flow | | Model | |
|------------|-------------|----------|---------|---------|-----------|
| 12/22 | 11/13/21/23 | P1 | ltr/min | CV (kg) | |
| G1 | G1 | G1/4 | 8.000 | ... 5.4 | UGP100065 |

Configuration

Function MO (1x NC "MV1")
O/C (1x NC "MV1")

Connections

Port (P1) external supply connection
 Port (12/22) supply to actuating
 Port (11/13/21/23) supply or release
 MA/MB/MP1 measurement connection

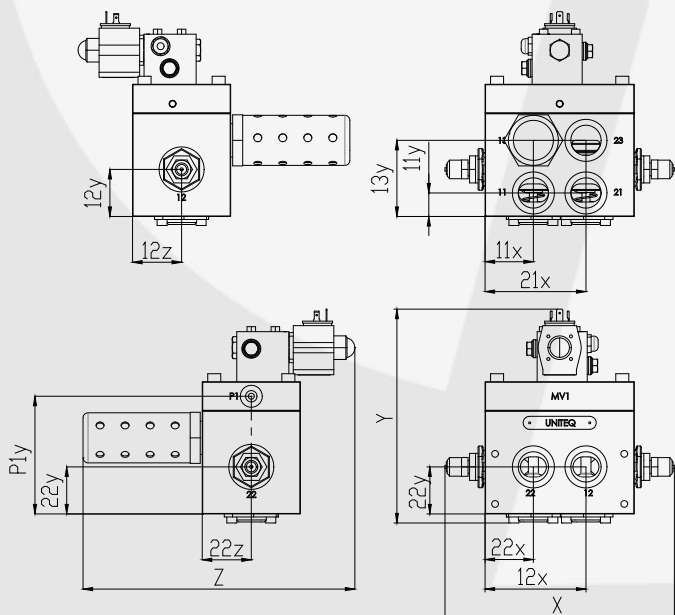
Electric

Power consumption solenoid valve (MV1):
 16.9 W, 24 VDC, 703 mA, IP65.
 17.3 VA 230 VAC, 75 mA IP67.

Order codes:

UGP100065-24VDC or UGP100065-230VAC

Drawing



Sizes

Dimensions

| 11 | 12 | 13 | 21 | 22 | 23 | P1 |
|------|------|------|-----|-----|-----|------|
| G1 | G1 | G1 | G1 | G1 | G1 | G1/4 |
| MP1 | MA | MB | 13y | 12x | 11x | 21X |
| G1/4 | G1/4 | G1/4 | 76 | 101 | 48 | 101 |
| 11y | 12y | 12z | 22y | 22x | 22z | |
| 24 | 47 | 49 | 47 | 48 | 49 | |
| X | Y | Z | | | | |
| 149 | 203 | 217 | | | | |

Support connection manifold

4 times holes M8, depth 12mm

Material

Housing Aluminium anodize
 Internal parts Stainless steel, Brass, POM
 Seals NBR / PUR

